

LOT 97- \$974.149



4
 2
 2
 2.5

LOT 97 BONETTI COURT

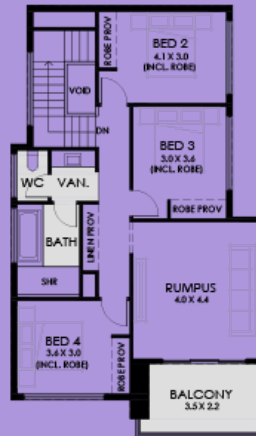


**BRADFORD
HOMES**

BY SCOTT SALISBURY



GROUND LEVEL



UPPER LEVEL

| | |
|-------------------------------------|-------------------|
| LOT AREA: | 477m ² |
| HOUSE AREAS (approx) m ² | |
| GF Living | 159.60 |
| FF Living | 88.9 |
| Garage | 39.4 |
| Alfresco | 15.9 |
| Balcony | 8.8 |
| Porch | 1.8 |
| TOTAL | 314.4 |

0439 391 883 | sales@parklandlittlehampton.au | Gardner Street, Littlehampton | RLA290544

While we have taken care to ensure the accuracy of information in this document at the time of publication, Parkland, Littlehampton gives no warranty and makes no representation as to the accuracy or sufficiency of any description, photograph, illustration or statement contained in this document and accepts no liability for any loss which may be suffered by any person who relies upon the information presented. All information provided is subject to change without notice. Dimensions, areas, layout, time periods and dates are approximate only and are subject to change without notice. Purchasers should make their own enquiries and satisfy themselves as to whether the information provided is current and correct and if appropriate, seek advice before entering any contract. Photographs and illustrations in this brochure are indicative only and may not depict the actual development. November 2023